



The Gaeltacht, Ireland at its best

WHERE TO GO IN THE GALWAY GAELTACHT

Galway

Connemara and the Aran Islands


GaelSaoire
SCÍTH SA GHAELTACHT
HOLIDAYS IN IRELAND'S GAELTACHT



For further information on holidays in Ireland's Gaeltacht contact

GaelSaoire

Web site: www.gaelsaoire.ie

Sé do Bheatha...

The Gaeltacht... What is it?

The Gaeltacht is the term used to refer to those areas of Ireland where the Irish language (Gaeilge) is still spoken as a community language, and its culture and traditions are very much alive and thriving.

These Irish speaking communities are scattered over seven counties and four provinces. Situated mainly along the Western seaboard, the Gaeltacht covers extensive parts of counties Donegal, Mayo, Galway and Kerry and also parts of counties Cork, Meath and Waterford. These areas present many varied and interesting holiday locations.

Each region possesses an environment rich with heritage and folklore, culture and traditions, and has a strong sense of its own identity and uniqueness. Here, within, lies the 'true Ireland'!

The Galway Gaeltacht...

Westwards from Galway city and along the shores of Galway Bay lies the Galway or Connemara Gaeltacht. Further out in the Atlantic Ocean are the three Gaeltacht Aran Islands of Inis Mór, Inis Meáin and Inis Oírr.

It will take you to its heart...





CONTENTS

Discover the Galway Gaeltacht.....	5
Barna to Inverin.....	7
Tully, Rossaveal, Carraroe and the Islands District.....	11
Scríb, Rosmuc, Carna and Caiseal.....	13
Cornamona, Tourmakeady and Joyce Country.....	15
The Aran Islands.....	19
Golfing.....	25
Walking and Cycling.....	29
Game Fishing and Sea Angling.....	35
Horse Riding.....	41
Language Learning and Cultural Courses.....	45
Scuba Diving.....	47
How to get to the Galway Gaeltacht.....	49
Try a few words.....	50
Map of Galway Gaeltacht.....	52/53

In the compilation of this brochure every care has been taken to ensure accuracy. Where errors and omissions are brought to the attention of Imeachtaí Gaelsaoire Teoranta future publications will be amended accordingly. However, Imeachtaí Gaelsaoire Teoranta do not accept any responsibility to any person for loss or damage arising from anything contained in this publication.

and the great Atlantic...





All that is best in Ireland's



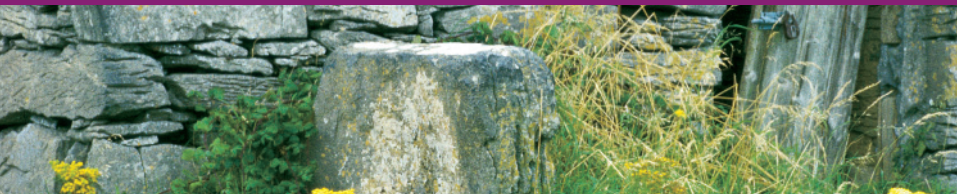
DISCOVER THE GALWAY GAELTACHT

Located west of Galway City, in large tracts of Connemara, is Ireland's largest Gaeltacht region. Here, the Irish language (Gaeilge) is the everyday spoken language of a people who live and work in Galway's cultural heartland. People here switch from Irish to English and vice-versa with ease and their English is peppered with Gaeilge phrases. Here is a treasure house of all that is best in rich Irish heritage, culture and folklore where people still sing and dance in the old traditional manner.

Driving westwards along Galway's coast, the variation in landscape will strike you. On the left is the powerful Atlantic and to your right is Connemara, a scenic vista of bogs, valleys and lakes whose spectacular intricate coastline encloses the dramatic Twelve Pins (Na Beanna Beola) and Maamturk Mountains. Quiet little roads wind through the majestic landscape and lead you from village to village. Still unspoiled and relatively unexplored, you will find clean beaches, scenic walks, peace and quiet and regardless of where you turn you are never far from the sea.

Just off the coast, in the mouth of Galway Bay, lie the three Aran Islands of Inis Mór, Inis Meáin and Inis Oírr. These islands are renowned for their unique way of life, where age-old traditions co-exist comfortably with modern living. The islands have a rich history that can be seen from their ancient monuments, from both prehistoric and Christian times.

heritage, culture and folklore...





6

Looking out across the





Quiet bays and inlets...

FROM BEARNA TO INVERIN — COIS FHARRAIGE

From the village of Bearna (Barna) some four miles west of the vibrant city of Gaillimh (Galway) the road to the Conamara (Connemara) Gaeltacht hugs the shoreline of world famous Cuan na Gaillimhe (Galway Bay). The picturesque 18-hole championship course of Bearna Golf Club looks out across the bay at the hills of Clare and the white limestone hills of the famous Burren and the Aran Islands. Set between timeless moorlands and the blue Atlantic Ocean, the coast road now meanders westward through Na Forbacha (Furbo) to the cheerful Gaeltacht village of An Spidéal (Spiddal) with its craftspeople, Irish music makers, Irish language television and film producers and a host of other creative minds visualising ideas through the Irish language. At the edge of the village is Tigh Standún, a landmark for visitors seeking the best in quality gifts and crafts from Ireland. Nearby is Ceardlann an Spidéil, a village of craftspeople specialising in vibrant tweeds, wood turning, pottery, screen-printing, knitwear, silks and leatherwear.

7

bay at the hills of Clare...





8

Rolling mountains and





Marvellous hillside and coastal walks...

Roadside beaches and a sheltered harbour add to An Spidéal's (Spiddal's) appeal as a family holiday destination. From Spiddal Pier there are deep-sea fishing trips available out along the bay or around the stunning beauty of the Aran Islands. Move west again along the road through Indreabhán (Inverin) where a turn to the right or left will introduce the uninitiated to a world of marvellous hillside, bogland or coastal walks. Sean Scoil Shailearna, the restored primary school at Indreabhán houses a community-based insight into nature and the elements in Connemara. From the airport at Indreabhán Aer Árann flies daily to the three Aran Islands, in just six short minutes flying time.

Spiddal Craft Centre

An attractive complex of workshops, producing a variety of crafts not generally available in other retail shops – a working craft centre and art gallery where latter-day artisans fashion items inspired by the beauty and heritage of the region.

Contact: Spiddal Craft Centre. Tel: 091 553376 Fax: 091 553017

sheltered harbours...





Community-based insight into nature...

Sean Scoil Shailearna

Sean Scoil Shailearna is a restored primary school situated in Indreabhán. An exhibition here offers a community-based insight into nature and the elements in Connemara, reflecting the influence of its bogs, mountains, rivers and lakes on a resilient people who still hold steadfast to their Gaelic language and heritage.

Contact: *Sean Scoil Shailearna. Tel: 091 593017*

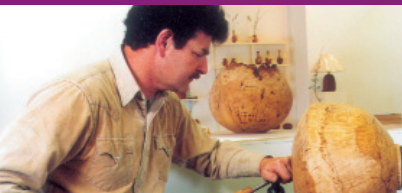
Cnoc Suain

Cnoc Suain provide week long courses in cultural, environmental or spiritual themes. Situated in An Spidéál, courses provided range from Traditional Irish Music, Natural History and Archaeology, Painting, to Landscape Photography, Traditional Story Telling and Song. Accommodation is provided on site.

Contact: *Cnoc Suain, An Spidéál, Co. Galway. Tel: 091 555703*

Web:*www.cnocsuain.com*

Rossaveal... departure



TULLY, ROSSAVEAL, CARRAROE AND THE ISLANDS DISTRICT

The landscape gradually changes now as we move further west past Irish language summer colleges and Tully Church. The Irish language Television service, TG4, has its headquarters at An Tulach (Tully) and soon the road spurs to the left for Ros a' Mhíl (Rossaveal) harbour, one of Ireland's major commercial fishing ports. Here is the mainland port of departure for the regular ferryboats to the Aran Islands, and it also has an angling centre. Also at Ros a'Mhíl there is an interesting Martello Tower. A left turn near Raidió na Gaeltachta (the Irish Language Radio Station headquarters) at Casla (Costello), will lead us to the village of An Cheathrú Rua (Carraroe) with its sheltered coves, beaches and unique coral strand. Perched on a peninsula on the Atlantic edge, An Cheathrú Rua has some breathtaking scenery.

A turn in the centre of the village An Cheathrú Rua and on through Béal an Daingean will open the world of Ceantar na nOileán (the Islands District). Situated between Kilkerrin Bay and Greatman's Bay, the main islands are Eanach Mheáin, Leitir Móir, Garumna and Leitir Mealláin. Access to the islands is by a chain of bridges and causeways, which were built over 100 years ago. These islands lie off the main tourist trail and therefore are still unspoiled and relatively

point to the Aran Islands...





unexplored. There is a great solitude and tranquility here in this peaceful and unpolluted world apart. Situated on Eanach Mheáin is a unique island hopping nine hole golf course and thatched cottage clubhouse, and nearby traditional holiday homes are available for rent.



SCRÍB, ROSMUC, CARNA AND CAISEAL

Returning from the islands district and the Carraroe peninsula, the road heads almost straight for Scríb (Screebe) and Rosmuc where Teach an Phiarsaigh, the summer home of Pádraig Mac Piarais, Ireland's 1916 patriot and poet, is located. Now a museum, the house has been restored as it was in Pearse's day and is open to visitors during the tourist season. The road continues west again along the coast to Carna (Carna) and Cill Chiaráin (Kilkerrin), a land of Great Celtic and early Christian resonance. This area is especially renowned for its traditional sean nós singers – keep an ear open for the impromptu sessions!. Small islands cluster in the bay and the most notable of these is perhaps Oileán Mhic Dara (MacDara's Island) with its Saint Mac Dara's church, where on the 16th of July each year, the Saint's day, boats will bring you to the island, a bare granite outcrop in the ocean on which stands an Early Christian stone oratory dedicated to the Saint's name. From Carna and Kilkerrin the road through this lovely West Coast Gaeltacht winds to An tSraith Salach (Recess) before turning back again towards An Teach Dóite (Maam), crossroads of the Connemara Gaeltacht.

Dan O'Hara's Homestead, Connemara Heritage and History Centre

This national award-winning centre offers visitors a unique history lesson spanning time from the prehistoric to the present. It has the restored home of Dan O'Hara, a tenant farmer who was evicted

in an unpolluted world...





Woodlands and waterfalls

because he was unable to pay his rent. He emigrated to the US and ended up selling matches in New York. An audiovisual presentation introduces the history of Connemara with spectacular shots of Connemara past and present. Other features include reconstruction of a crannóg (pre historic lake dwelling), ring fort and clochán. An old style carriage takes visitors on a guided tour through the centre. Facilities at the centre include a large craft shop, tearoom, telephone, and toilets.
Contact: *Dan O' Hara's Homestead, Connemara Heritage and History Centre. Tel: 095 21246 Fax: 095 22098.*

Teach an Phiarsaigh (Patrick Pearse's Cottage)

A small restored cottage used by Patrick Pearse (1879 - 1916) leader of the 1916 Rising, as a summer residence. The interior, although burned during the War of Independence, has been reconstructed and contains an exhibition and a number of mementoes of Pearse. Access for people with disabilities is restricted.

Contact: *Teach an Phiarsaigh, Ros Muc, Co. Na Gaillimhe; Tel: 091 574292*

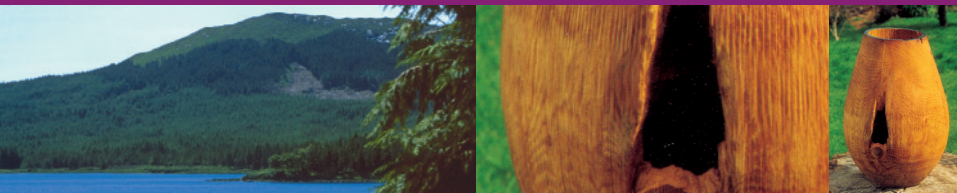
Dan O'Hara sold



CORNAMONA, TOURMAKEADY AND JOYCE COUNTRY

From Maam Cross the road directly northwards heads inland towards Corr na Móna (Cornamona) and the lush expanse of Joyce Country. It was in this area that the famous John Wayne and Maureen O'Hara story "The Quiet Man" was filmed. The friendly, welcoming Corr na Móna community are always anxious to share their lovely lakeside location on the shores of Lough Corrib, famous for fishing, boating and hillwalking. In a nearby lake island is Caisleán na Circe, one time castle home of the great pirate Queen of Connemara, Grace O'Malley, who lived in the time of Queen Elizabeth 1 of England. An Fháirche (Clonbur) nestles in colourful countryside between Lough Corrib and Lough Mask, enjoying, as it were, the best of both worlds. Further west is An Lionán (Leenane) where John B. Keane's great story "The Field" was filmed. Near here, on the Renvyle Peninsula there is an Aquarium and Maritime Museum, a fascinating and informative exhibition of Connemara's marine heritage. The Partry Mountains sweep down along the shores of Lough Mask, sheltering Tuar Mhic Éadaigh (Tourmakeady) with its woodlands and waterfalls. Pleasure boats are available on Lough Mask, and Tourmakeady has a great Irish Knitwear tradition.

matches in New York...





16

Connemara's National Park... A 2000



Connemara National Park

Situated on the Gaeltacht border, Connemara's National Park is a 2000-hectare state owned conservation centre incorporating of mountains, bogs and grasslands with wonderful wildlife. Four of the mountains belong to the Twelve Bens range, including the highest, Benbaun(730 metres). At the centre of the park is the valley of Glanmore where the Polladirk River flows. Traces of ancient settlements can be seen in the park, including 4,000-year-old megalithic tombs and markings of former grazing areas. Facilities include an audio-visual show and a photographic display of Connemara scenery. There are picnic facilities, nature trails and a summer series of walks and illustrated talks.

Contact: *Connemara National Park Tel: 095 41054*

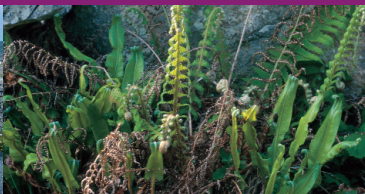
hectare conservation centre...





18

On the edge of Europe...



THE ARAN ISLANDS

Out in the Atlantic Ocean, on the very edge of Europe, lie the three Gaeltacht Aran Islands of Inis Mór (Inismore), Inis Meáin (Inishmaan) and Inis Oirr (Inisheer). These islands are renowned for their unique way of life, where age-old traditions co-exist comfortably with modern living. The islands have a rich history, which can be seen from their ancient monuments, from both prehistoric and Christian times. Here is a place to touch the past, to sense the spirit of Celtic and Gaelic Ireland.

Inis Mór

Inis Mór, as its name suggests is the “big island”, the largest of the three Aran Islands. Its main village is Kilronan. This is an ancient land set in an endless sea where great labyrinths of limestone sweep upwards to awesome cliffs, with their strange, weathered monuments of stone. Meandering stone walls pattern small patchwork fields, sometimes running down to clean, unpolluted and quiet beaches. Approximately 9 miles (12 kms) long and 2 miles (3 kms) wide Inis Mór is a walker’s holiday paradise. Across the island and over some many miles of craggy, sandy and sometimes stony shoreline there is an abundance of wildlife and over 437 varieties of wild flower. Here is an island of limestone rafts, interlinking trails and breathtaking cliffs, with their panoramic views of Connemara, Clare and sometimes as far south as Kerry, on a clear horizon.

a place to touch the past...





20

A window into the lives and



For the slightly less energetic, Inis Mór can be discovered on bicycles available for hire on the island or in a more leisurely traditional pony and trap. There are also guided tours available, in minibuses, from Kilronan Pier. Visitors can get a superb introduction to the islands' culture and history at Ionad Árann, the excellent visitor centre.

Dún Aengus

Dún Aengus is a large eleven-acre prehistoric stone cashel situated on Inis Mór, believed historically to be of great maritime power. Experts say it was built between 800BC and 400AD. Defended on the landward side by three rings of huge stone battlements, it is also protected by sharp up-ended, limestone rocks (cheveaux de frise) placed in the ground as a defence against approaching enemies. Set on the edge of a sheer drop of almost 300ft to the sea, it offers a spectacular view over Galway Bay. It is one of the most famous and important prehistoric monuments in Europe. The Dun Aengus Heritage Centre is situated at Kilmurvey and is open to visitors.

Aran Heritage Centre

Ionad Árann – the Aran Centre is just a few minutes walk from Kilronan village. This is a most revealing and awe-inspiring place. It is a window into the lives and times of the people of Aran, over many generations. A guided tour through this brilliant presentation will take you back more than two thousand years. Vivid exhibitions will introduce you to the landscape, traditions and culture of these

times... of the people of Aran...



harsh, yet beautiful Atlantic Islands. The history, geology and present lifestyle of the people of Aran are illustrated through a series of display charts, photographs and maps. The centre explores the currach making traditions and the occupations that gave the islanders a precarious living in the past. Many of the exhibitions in Ionad Árann give an insight into the joys and difficulties and ordinary matters of island life.

Contact: Ionad Árann Tel: 099 61355 Fax:099 61454

Inis Meáin (Inishmaan)

Inis Meáin – the middle island is situated between Inis Mór and Inis Oírr. Pathways across rocky hillsides full of wild flowers in the southern part of the island beckon the walker while the northern shores of Inis Meáin are endowed with quiet, sandy beaches.

Interesting historical monuments on Inis Meáin include the Prehistoric Conor Fort, the most striking of the circular or oval dry-stone forts on the Aran Islands. On the eastern end of the island is the beautiful Kilcanonagh chapel. The church of Mary Immaculate, built in 1939 has magnificent, radiant stained-glass windows created in the famed Harry Clarke Studios. Teach Synge, the thatched cottage where writer John Millington Synge stayed has been carefully and authentically restored in recent times and is open to visitors.



Inis Oírr (Inisheer)

Inis Oírr – means the eastern island and is the smallest of the three Aran Islands. Inis Oírr has a proud tradition of Irish music, song and dance. The north of the island features the golden sands of a beautiful clean beach and is dominated by a 14th century castle built by the O'Briens. Among the Island's early Christian ruins is the 11th – 12th century church associated with St.Gobnait who was said to have been the only woman allowed on the islands in the early Christian era. The island's cultural and craft centre includes woodcraft, landscape paintings, pottery and a glimpse of this lovely island's heritage.

Getting to the Aran Islands

Island Ferries provide a ferry service to the Aran Islands from Ros a'Mhíl all-year round with coach connections from their Galway office.

Contact: Island Ferries Tel: 091 568903/572273; Fax: 091 568538;
Email: island@iol.ie

Aer Árann also serves all three Aran Islands from the airport in Indreabhán, just a few miles past An Spidéal on the coast road to Connemara.

Contact: Aer Árann Tel: 091 593034; Web: www.aerarann.ie

sides full of wild flowers...





GOLFING

Golfing in the Galway Gaeltacht

The West of Ireland offers the visitor superb golf courses, which have been fashioned out of a naturally beautiful landscape. Whether you want to play by the sea or inland, there are a terrific variety of courses within fifty to sixty miles of Galway City. The following golf courses are located in or bordering with the Gaeltacht area.

Connemara Isles Golf Course

Situated in the heart of Connemara this is a unique island course with some of the finest golf holes in the country. This 9-hole course, located in Eanach Mheáin, is linked to the mainland by a causeway at Beal an Daingean. The course's ocean inlets and rocky outcrops provide natural hazards demanding steady nerves. After a game, visitors can relax in the friendly atmosphere of Ireland's only thatched clubhouse, which is warmed by an open fire. Par 70 Links.

Contact: *Connemara Isles Golf Club. Tel: 091 572498/572212 Fax: 091 572214*

visitor superb golf courses...





Generous lush fairways...

Bearna Golf and Country Club

Located in a most beautiful scenic area 3km north of Bearna village and approximately 8km from Galway, this 18-hole championship golf course is set in typical rugged Connemara countryside with fairways constructed between rocks and heather. Enjoying breathtaking views of Galway Bay, the course was designed by Bobby Browne. Par 72 Parkland.

Contact: *Bearna Golf and Country Club Tel: 091 592677/592674*

Oughterard Golf Club

Oughterard Golf Club is located just 15 miles from Galway on the N59 at the gateway to Connemara. Generous, lush fairways bordered by mature trees and woodlands are a feature of this delightful and excellently maintained 18-hole course, which has been developed to championship standard, but tailored to the skill of golfers of all abilities. Par 70 Parkland.

Contact: *Oughterard Golf Club Tel: 091 552131 Fax: 091 552733*

...fashioned out of a





27

naturally beautiful landscape...



28

From rugged mountains, to coastal



WALKING AND CYCLING

For those who enjoy a gentle pace or a spirited hike across rugged mountain and coastal trails, the Galway Gaeltacht offers all. There are hidden byways, shorelines and beaches, forest walks and open bogland and all offer solitude and natural beauty in abundance. The routes are generally uncrowded, but it is still a pleasure to meet and chat with other walkers along the way.

Another way to take advantage of this untamed landscape is by bicycle. You can enjoy the fresh Atlantic air amid the small stone-walled fields, towering mountains and tranquil lakes, rest on a sandy beach or visit a country pub.

Bealach na Gaeltachta – Slí Chonamara

Bealach na Gaeltachta (The Gaeltacht Way) – Slí Chonamara is a new 240km (150 mile) long distance walking route developed to the standard of the national Way-marked Ways. Slí Chonamara can be accessed from almost any point along its route and is serviced by more than 150 approved accommodation providers, including Hotels, Guest Houses, B&B, Hostels, Self-Catering and Caravan/Camping sites.

trails... you choose the pace!



The route is mainly along open country with the initial 10km going through historic Galway and the City outskirts bringing the walker through such historic areas as The Spanish Arch and the Claddagh. Once outside the city, in rural Connemara, this walk meanders its way through timeless moorlands and along seashore paths on the coast of Galway Bay. It links up with the Western Way in north Connemara at Oughterard and in the Inagh Valley.

Route Details

Galway City, An Spidéal, An Cheathrú Rua, the Islands District, Ros Muc, Recess and Oughterard. Total distance: 240km/150 miles. For a brochure and detailed map outlining the Bealach na Gaeltachta route contact your local tourist office.

The Western Way

Part of the Western Way route passes through the Galway Gaeltacht from Oughterard to Leenane. This route starts at Oughterard and runs through Joyce Country following the shore of Lough Corrib to Maam. From Maam it finds a low-level pathway through the great quartzite mountain ranges of the Maum Turks and Twelve Bens, before descending to the deep, narrow valley of Killary Harbour and junction with The Western Way (Mayo) near Leenane.

Route Details:

Oughterard, Maam, Maumeán (pilgrim mountain), Inagh, Toorenaconna, Leenane. Total Distance: 50km/31miles. For a brochure and detailed map outlining the Western Way contact your local tourist office.

Week long cycling tours along the





coast and quiet meandering backroads...



Along great beaches, moors, mountains,



Connemara Walking Centre

The Connemara Walking Centre operates a programme of guided half-day walks and full day tours throughout the summer season. These walks explore the heritage and landscape of the bogs, mountains and islands of Connemara. Also offered is a self-guided holiday through Connemara and its offshore islands exploring wild mountain scenery, rugged coasts and beautiful islands. This holiday can range from four to eight days.

Contact: *Connemara Walking Centre Tel: 095 21379 Fax: 095 211845 website: www.walkingireland.com.*

Connemara Gaeltacht Cycling Tours

Connemara Gaeltacht Cycling Tours provide week long cycling tours around the quiet back roads of rural Connemara. A deluxe cycling package combines the best of Ireland's scenery, hospitality and accommodation. The average cycling distance is 45km/30miles and longer options are available. There is also a back up mini-bus service and optional trips to the Aran Islands are available.

Contact: *Connemara Gaeltacht Cycling Tours. Tel: 095 33618/33542 Email: ardmorew@iol.ie*

forest trails and lake shores...





Some of the most prolific Atlantic Salmon and Sea

GAME FISHING

The Galway Gaeltacht is really one giant fishery, merely intersected by roads, and containing three of the most important Brown Trout fisheries in Europe. It also contains some of the most prolific Atlantic Salmon and Sea Trout fishing anywhere in Europe. A glance at the topography of the region will immediately convey the vast amount of rivers and lakes that have made this region the subject matter of many artists, writers and filmmakers.

In the Southern and central areas the lakes are alkaline in nature, providing both ideal conditions and habitats for the Brown Trout for which the area is rightly famous. This contrasts sharply with the more northern and western areas of the region which are interspersed with more acidic lake and river systems which, although they contain Brown Trout, are more famous for their Salmon and Sea Trout fishing.

Lough Corrib is Ireland's second largest lake and one of Europe's best examples of a large limestone lake, producing an abundance of wild brown trout. Trolling takes place throughout the season but the lake is famous for high quality fly-fishing and dapping.

Lough Mask is a limestone lake, approximately 10 miles long and 4 miles wide, with an excellent stock of Brown Trout. It is a popular wet fly lake with a Mayfly hatch and exciting dapping. The Mayfly dominates fishing from Mid-May to Mid-June and the East shore of the Mask is the best Mayfly area.

Trout to be found anywhere in Europe...





36

Lough Mask...A popular wet fly lake with





A vast amount of rivers and lakes...

Costello and Fermoyle Fisheries

The Costello, Fermoyle and South Connemara Fisheries boast some of the most vibrant sea trout populations in Europe. A sea trout and salmon fishery, anglers are offered the chance to fish the river Casla. Both river and lough fly fishing with nomination and discounted angling schemes are on offer.

Contact: *Costello and Fermoyle Fisheries, Bridge Cottage, Costello, Galway. Tel: 091 572196; Email: cosfer@iol.ie ; Web: www.iol.ie/~cosfer*

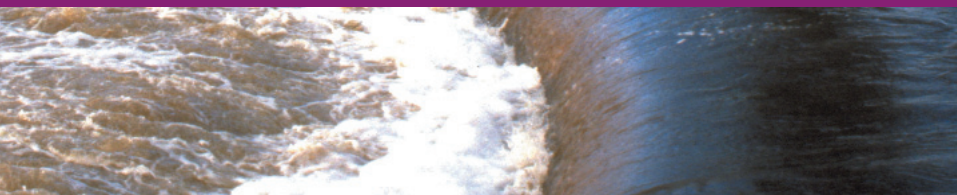
Castaway Fishing Holidays

Castaway Fishing Holidays organises fishing holiday packages to suit all budgets, family commitments and fishing abilities in the heart of Connemara. All fishing equipment supplied, transport to and from fishing venues, packed lunches, licenses and one Guide available to every two anglers. Fishing activities vary from river and lake fishing to angling trips on the open sea.

Contact: *Derrykyle, Costello, Co. Galway Tel: 091 572667; Email: info@fishingguidesireland.com*

37

a Mayfly Hatch and exciting dapping...





38

Sea Angling with good catches of many species...



SEA ANGLING

Sea Angling is a popular pursuit in the area, with good catches of the predominant species of Pollack, Cod, Bass, Flatfish and indeed good Blue Shark fishing during the summer months. Modern, certified angling boats are available to the travelling angler in addition to ever-ready advice from the experienced skippers. Shore fishing is possible from almost anywhere on the coast.

There are licensed boat operators based in the Galway Gaeltacht, however anglers are advised to make their own enquiries in respect of licences and insurance requirements.

Galway Bay Sea Safaris

Operator: Kevin Mac Gabhann
Address: An Spidéal, Co. Galway
Tel: 091 553286
Base: An Spidéal

Aran Islands Sea Angling

Operator: Enda Conneely,
Address: Innishere, Co. Galway
Tel: 099 75073
Base: Inishere

Spiddal Angling School

Learn to fly fish in a day – instructions given from basic to advanced. Will cater for individuals or small groups. Fly casting tuition, boats and ghillies available.

Contact: *Spiddal Angling School Tel: 091 553510*

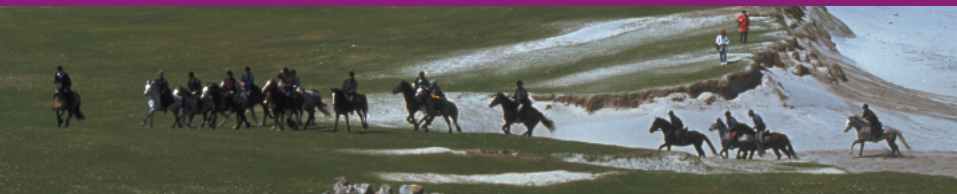
Pollack, Cod, Bass and Blue Shark...





40

Explore boreens, mountains and beaches...



HORSE RIDING

Horse Riding in the Galway Gaeltacht

One of the most enjoyable ways of seeing the Connemara landscape, home of the Connemara Pony, is on horseback. Revel in the varied landscape of dramatic mountains, expansive lakes, majestic rivers, small fields surrounded by grey dry stone walls, beaches, and breathe in the crystal clear air while guiding your mount through the Galway Gaeltacht.

The following horse-riding centres listed are approved by AIRE – the Association of Irish Riding Establishments and operate in and around the Galway Gaeltacht.

Claregalway Equestrian Centre

This centre is set on 7 hectares of typical Galway farmland and offers an exciting cross country course and a mix of disciplines to suit all abilities. There is a fine indoor arena and students are prepared for the BHS examinations. Accommodation is provided in the farmhouse and the stables also provide a large gallery with canteen facilities.

Contact: Claregalway Equestrian Centre, Rockwood, Claregalway Tel: 091 798289 Fax: 091 761221

in the home of the Connemara Pony...



Tonabrockey Equestrian Centre

Located 2.5km from Galway City, this is a trekkers paradise. Here one can absorb the breathtaking view of the wild Atlantic Ocean, the world famous Aran Islands and the Burren while trekking through the hills and valleys of Connemara. There are horses and ponies to suit beginners and advanced riders. Individuals, groups and unaccompanied children are catered for.

Contact: *Tonabrockey Equestrian Centre, Tonabrocky, Bushypark.*

Tel: 091 526553 Fax: 091 527579

Rockmount Riding Centre

Rockmount, established in 1972, is the longest established and largest indoor riding school in the west of Ireland. Customers quickly become friends and return again and again. As founder members of AIRE, professionalism, safety and the highest standards of instructions are our priority. The indoor arena is suitable for show jumping, dressage, etc. Groups and individual lessons available and all standards are catered for.

Contact: *Rockmount Riding Centre, Claregalway*

Tel: 091 798147 Fax: 091 798147

Rusheen Riding Centre

This equestrian centre is located near Salthill at Rusheen Bay. The centre offers extensive beach riding, a cross country course and trekking around Rusheen Bay.

Contact: *Rusheen Riding Centre, Gentian Hill, Salthill. Tel: 091*

521285 Fax: 091 524284



Clonboo Riding School

Situated midway between Galway City and Headford, the Clonboo Riding School offers hacks on peaceful country lanes with views of Lough Corrib, suitable for both beginners and advanced riders. Facilities include enclosed m̀anege, liveries and changing rooms. Side-saddle lessons and day/week courses for children.

Contact: *Clonboo Riding School, Ard na Coille, Corrandulla.*

Tel: *091 791362*

Aille Cross Equestrian Centre

Located in Loughrea, Aille Cross Equestrian Centre offer a range of treks covering Connemara, the coast and a number of cross country trails.

Contact: *Aille Cross Equestrian Centre, Loughrea. Tel: 091 841216*

Ard Aoibhinn Stables

Ard Aoibhinn Stables are located in Tuar Mhic ́Eadaigh in the County Mayo Gaeltacht area, adjacent to the Galway Gaeltacht. It is a working farm riding centre, which offers residential and self-catering accommodation. One can enjoy a wide variety of wildlife and the beautiful scenery of the Partry Mountains on horseback. The Connemara pony is proudly featured in the stables alongside a selection of sturdy Irish Hunter types.

Contact: *Ard Aoibhinn Stables, Cappaduff, Tourmakeady, Co. Mayo.*

Tel: *092 44009*

and advanced riders...





44

Irish dancing, singing and a range of specially



LANGUAGE LEARNING

Áras Mháirtín Uí Chadhain

Áras Mháirtín Uí Chadhain offers a range of Irish language courses specially constructed to cater for the needs of adults, at all learning stages. Situated in An Cheathrú Rua, the Gaeltacht location enables participants to maximise their contact with the language. Weekend courses and one and two-week intensive courses in spoken Irish are offered. The teaching programme enables learners to master basic structures, improve fluency and accuracy and build vocabulary. All course programmes include traditional and cultural activities, workshops on Irish dancing, traditional singing and visits to local places of interest.

Contact: Áras Mháirtín Uí Chadhain at: Tel: 091 595101/595038
Fax: 091 595041

Áras Shorcha Uí Ghuairim

Áras Shorcha Ní Ghuairim is an Educational and Cultural Centre of the National University of Ireland, Galway which organises cultural meetings and events in conjunction with other groups. These include Iorras Aithneach Folklore Assembly, Joe Éiniú Festival, Traditional Music and Social Evenings, and Sean-Nós and Musical Instrument Teaching Workshops.

Contact: Áras Shorcha Ní Ghuairim, Roisín na Mainiach, Carna, Co. Galway. Tel: 095 32834; Fax: 095 32836
E-mail: faisneis@oegcarna.com





46

Explore underwater coral beaches and crystal



SCUBA DIVING

Aran Islands Dive Centre

The seas around the Aran Islands represent some of the most spectacular and beautiful underwater terrain to be found anywhere in Ireland. Inis Meáin, one of the Aran Islands, is home to the Aran Islands Dive Centre. The entire centre is housed under one roof and is built in close proximity to a quiet pier. The centre is designed to make the pre and post dive experience simple and pleasurable. Facilities include 30 full sets of rental equipment, 90 scuba cylinders, drysuits for hire, large compressor and storage banks, underwater camera hire equipment, storage area and large classrooms with all modern instructional aids. Special activities and trips include a three-day dive safari, underwater photography workshop, dive club holidays and also a range of PADI training programmes.

Contact: Aran Islands Dive Centre Tel: 091 582422 or 099 73134

Galway Bay Scuba Divers

The rugged coastline and the environs of the islands region of Connemara are a haven for divers including unique underwater coral beaches and clear waters. Programmes cater for beginners and experienced divers alike.

Contact: Galway Bay Scuba Divers Tel: 091 553065/087 9192012

clear waters on exciting diving safaris...





48

Discover Connemara and the Aran Islands...



THE GALWAY GAELTACHT... HOW TO GET THERE

Galway City, the Gateway to the Galway Gaeltacht and the Aran Islands, is served by excellent trunk roads from the major entry points to Ireland.

Access by Air – Galway Airport

Galway Airport is served from Dublin International Airport. It only takes 40 minutes to fly from Dublin to Galway and there are 5 flights daily operated by Aer Arann.

Access by Bus

Bus Éireann, City Link, Nestors and other private operators provide a choice of bus services between Galway, Dublin and other destinations throughout Ireland.

There are bus connections to the main villages in the Galway Gaeltacht.

Access by Rail

Iarnród Éireann (Irish Rail) operates several trains daily between Dublin and Galway in both directions.





Experience spoken Irish in

TRY A FEW LITTLE WORDS...

Cúpla focal (*coopla fukal*) = A few words

Dia dhuit (*deea gwit*) = Hello

Sé do bheatha (*Shay duh vaha*) = You are welcome

Conas tá tú? (*cunus taw too*) = How are you?

An bhfuil tú go maith? (*on will too guh moh*) = Are you well?

Tá mé go maith, buíochas le Dia (*taw may gu moh bweekus leh deea*) =
I am well, thanks be to God

Tá an lá go breá (*taw an law gu braw*) = It is a fine day

Cá bhfuil an oifig fáilte? (*caw will on offig faulte?*) =
Where is the tourist office?

Cá bhfuil oifig an phoist? (*caw will offig an fisht*) =
Where is the post office?

Help yourself to a little everyday





Ireland's cultural heartland...

Cá bhfuil na Gardaí Síochána? (*caw will na Gawardee Sheeacanna?*) =
Where are the civic guards (the police)?

Cá bhfuil an séipéal (*caw will on shape - ay ul?*) = Where is the church?

Slán leat (*slawn lat*) = Goodbye

Slán tamall (*slawn tomol*) = Goodbye for a little while

Bíodh lá maith agat (*bee-uk law moh ugut*) = Have a good day

Bíodh saoire deas agat sa Ghaeltacht (*bee-uk seera das ugut sa
Ghaeltacht*) = Have a nice holiday in the Gaeltacht

Go dtí go gcasfaimíd arís (*guh dee guh gosfímeed areesh*) =
Until we meet again

Céad míle fáilte romhat (*kayud meela faulte rowat*) =
A hundred thousand welcomes to you.

Irish, it's easier than you think!





Tuar Mhic Éadaigh
Toormakeady

Partraí
Partry

Loch Measca

Baile an Róba
Ballinrobe

An Líonán
Leenane

An Fhairche
Clonbur

Conga
Cong

Dúiche
Sheoigheach

An Mám
Maum

Corr na Móna
Cornamona

Sraith Salach
Recess

An Teach Dóite
Maam Cross

Loch Coirib

Headford
Áth Cinn

N59

L100

N17



Uachtar Ard
Oughterard

Eanach Dhúin
Annaghdown

Camas
Camus

Ros Muc
Rosmuck

Maigh Cuilinn
Moycullen

Baile an Chláir
Claregalway

Ros a' Mhíl
Rossaveal

An Cheathrú Rua
Carraroe

Cois Fharraige

Na Forbacha
Furbo



GAILLIMH
Galway

Indreabhán
Inverin

An Spidéal
Spiddal

Bearna
Barna



Inis Meán
Inishmaan

Dúalainn
Doolin

Inis Oírr
Inisheer



Boirin
Burren

GaelSaoire

Web site: ***www.gaelsaoire.ie***